




ප්‍රාණ
A POWERFUL HEALING
P
R
A
N
A

Certified by:
Auric Science Institute Sri Lanka

Personal sessions;

 imagevault.co@gmail.com

Pranic healing is a no touch, no drug form of energy healing that works by balancing and harmonizing the body's energy using prana (also called the life force). The word "prana" comes from Sanskrit and means "life force" the invisible energy that keeps the body alive and healthy.

Core Philosophy

Pranic healing is built on two fundamental principles:

- 1. The Principle of Self-Recovery: The body naturally heals itself, but this process can be accelerated by increasing life energy.**
- 2. The Principle of Life Energy: Physical ailments first appear as energetic disruptions in the aura (energy body) before manifesting physically, so healing works on this energy blueprint.**



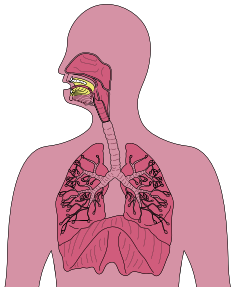
A SESSION INCLUDES;

- **Initial interview and 1 on 1**
- **Healing types of conditions**
- **Chakra and body parts scanning**
- **Cleansing the chakras**
- **Cleansing the body**
- **Cleansing the Aura**
- **EnErgizing the chakras**
- **EnErgizing the Overall body**



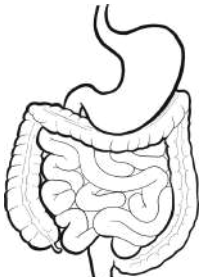
01. RESPIRATORY SYSTEM

This section covers ailments such as lung infection, cough, sinusitis, Covid 19, tuberculosis, Emphysema, Chronic Obstructive Pulmonary Disease (COPD), Asthma, Bronchitis, Influenza, Pneumonia and other respiratory conditions.



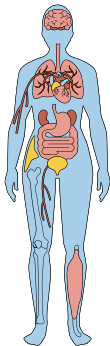
02. DIGESTIVE SYSTEM

This section covers ailments such as Vomiting, diarrhoea, constipation, indigestion, ulcers, hemorrhoids, Hernia, High cholesterol, Fatty Liver, infections, appendicitis, gall stones, Hepatitis, assimilation issues and swallowing issues.



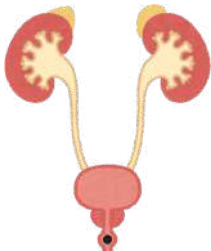
03. ENDOCRINE SYSTEM

This section covers Diabetes, hyper-thyroidism, hormonal imbalances and other endocrine ailments.



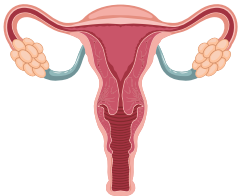
04. URINARY SYSTEM

This section covers ailments such as infections, stones, stimulating urination, Chronic Kidney Diseases, incontinence, inflammation of prostate gland.



05. REPRODUCTIVE SYSTEM

This section covers ailments such as menstruation related issues, ovarian cysts, prolapsed uterus, enlarge prostate, impotence, Sterility, STD, child birth related issues.



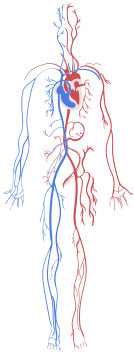
06. MUSCULAR SKELETAL SYSTEM

This section covers ailments such as back pain, neck pain, knee pain, shoulder pain, other joint pains and related issues, osteoarthritis, gout, rheumatoid arthritis, Lupus, cramps, bursitis, sprain, hernia, dislocations and sport injuries.



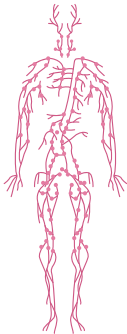
07. CIRCULATORY SYSTEM

This section covers ailments such as coronary artery block, irregular heartbeat, defective valves, enlarge heart, congenital heart ailments, atherosclerosis, varicose veins, hypertension, stroke and infections.



08. NERVOUS SYSTEM

This section covers ailments such brain damages, Bells paisy, facial ticks, numbness, splepsy Parkinson's disease, encephalitis, meningitis, mental retardation and multiple sclerosis.



09. LYMPHATIC SYSTEM

10. ENHANCE IMMUNITY

11. SKIN CONDITIONS

12. FEVER

13. TIREDNESS

14. EYE RELATED CONDITIONS



15. EAR RELATED CONDITIONS

16. TOOTHACHE

17. HEADACHE





**"THROUGH PRAṆA, WISDOM FLOWS.
THROUGH WISDOM, HEALING BEGINS."**

Connect with us to begin your healing journey

 **[imagevault.co@gmail.com]**

Pranic healing can be performed remotely; distance healing is fully effective.

certified by

